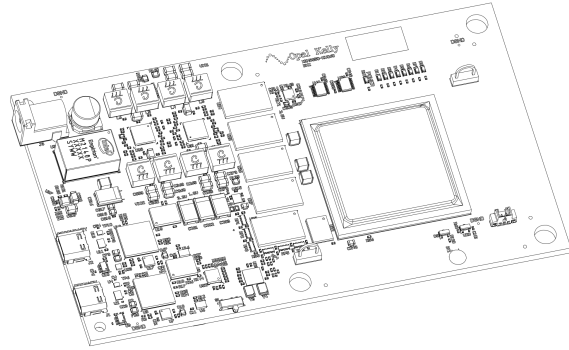


XEM8350

The XEM8350 is a compact USB 3.0 (SuperSpeed) FPGA integration module featuring a Xilinx Kintex UltraScale FPGA, 36 Gib (512 M x 72-bit) DDR4 SDRAM, a 256 Mib SPI Flash device, high-efficiency switching power supplies, and three high-density 0.5mm expansion connectors which include full gigabit transceiver capability. A programmable PLL is attached to the FPGA.

The two independent USB 3.0 SuperSpeed interfaces provide fast configuration downloads and PC-FPGA communication as well as easy access with our popular FrontPanel application and SDK. Because the interfaces are completely independent, full duplex operation is supported.



Documentation and Reference Materials

The following is a comprehensive list of documentation available for this device.

XEM8350 User's Manual	This online documentation space.
XEM8350 Pins Reference	The interactive Pins reference for the device provides detailed pinout information as well as automated constraint file generation. Export functionality is provided to PDF, CSV. Constraint files are provided for UCF, XCD (Xilinx) and QSF, SDF (Altera).
FrontPanel SDK User's Manual	The online documentation space for the FrontPanel SDK.
FrontPanel API Reference	Online API reference with detailed usage for every API method.

Copyright

Software, documentation, samples, and related materials are Copyright © 2006-2021 Opal Kelly Incorporated.

Opal Kelly Incorporated
Portland, OR
<https://www.opalkelly.com>

All rights reserved. Unauthorized duplication, in whole or part, of this document by any means except for brief excerpts in published reviews is prohibited without the express written permission of Opal Kelly Incorporated.

Opal Kelly® and FrontPanel® are registered trademarks of Opal Kelly Incorporated. Linux is a registered trademark of Linus Torvalds. Microsoft and Windows are both registered trademarks of Microsoft Corporation. All other trademarks referenced herein are the property of their respective owners and no trademark rights are claimed.