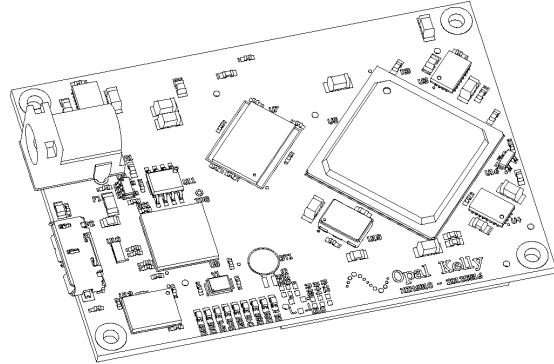


# XEM6310 Home

The XEM6310 is a compact USB 3.0 (SuperSpeed) FPGA integration module featuring the Xilinx Spartan-6 FPGA, 1 Gib (64 Mx16-bit) DDR2 SDRAM, two 128 Mib SPI Flash devices, high-efficiency switching power supplies, and two high-density 0.8-mm expansion connectors. The USB 3.0 SuperSpeed interface provides fast configuration downloads and PC-FPGA communication as well as easy access with our popular FrontPanel application and SDK. A low-jitter, 100 MHz crystal oscillator is attached to the FPGA.



## Documentation and Reference Materials

The following is a comprehensive list of documentation available for this device.

<a href="#">XEM6310 User's Manual</a>	This online documentation space.
<a href="#">XEM6310 Pins Reference</a>	The interactive Pins reference for the device provides detailed pinout information as well as automated constraint file generation. Export functionality is provided to PDF, CSV. Constraint files are provided for UCF, XCD (Xilinx) and QSF, SDF (Altera).
<a href="#">FrontPanel SDK User's Manual</a>	The online documentation space for the FrontPanel SDK.
<a href="#">FrontPanel API Reference</a>	Online API reference with detailed usage for every API method.

## Copyright

Software, documentation, samples, and related materials are Copyright © 2006-2018 Opal Kelly Incorporated.

Opal Kelly Incorporated  
Portland, OR  
<https://www.opalkelly.com>

All rights reserved. Unauthorized duplication, in whole or part, of this document by any means except for brief excerpts in published reviews is prohibited without the express written permission of Opal Kelly Incorporated.

Opal Kelly® and FrontPanel® are registered trademarks of Opal Kelly Incorporated. Linux is a registered trademark of Linus Torvalds. Microsoft and Windows are both registered trademarks of Microsoft Corporation. All other trademarks referenced herein are the property of their respective owners and no trademark rights are claimed.