

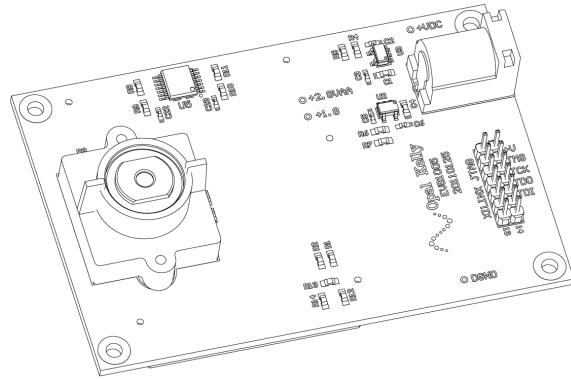
EVB100X

The EVB1005 (shown) is an image capture module for use with the following Opal Kelly FPGA modules:

- XEM7310 and XEM7010
- XEM6310 and XEM6010
- XEM6110
- XEM3050
- XEM3010

The EVB1006 is an equivalent capture module for the XEM6006, XEM7350, or other FMC carrier. The EVB1007 is an equivalent capture module for the ZEM4310 or other HSMC carrier.

All modules include a Micron MT9P031112STC 5 mega-pixel color image sensor and necessary power supply circuitry. Designed as evaluation boards for Opal Kelly integration modules, the modules provide an excellent platform for getting accustomed to the FrontPanel SDK.



Documentation and Reference Materials

The following is a comprehensive list of documentation available for this device.

EVB100X User's Manual	This online documentation space.
FrontPanel SDK User's Manual	The online documentation space for the FrontPanel SDK.
FrontPanel API Reference	Online API reference with detailed usage for every API method.

Copyright

Software, documentation, samples, and related materials are Copyright © 2006-2017 opal Kelly Incorporated.

Opal Kelly Incorporated
Portland, OR
<https://www.opalkelly.com>

All rights reserved. Unauthorized duplication, in whole or part, of this document by any means except for brief excerpts in published reviews is prohibited without the express written permission of Opal Kelly Incorporated.

Linux is a registered trademark of Linux Torvalds. Microsoft and Windows are both registered trademarks of Microsoft Corporation. All other trademarks referenced herein are the property of their respective owners and no trademark rights are claimed.