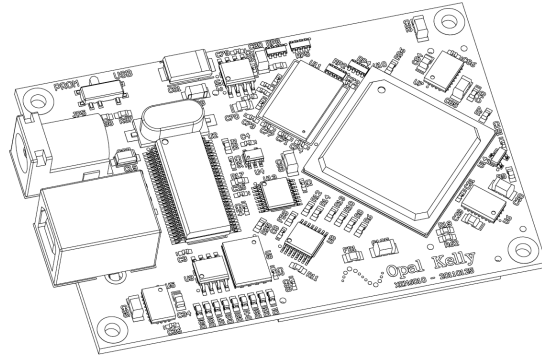


XEM6010 Home

The XEM6010 is a compact USB 2.0 FPGA integration module featuring the Xilinx Spartan-6 FPGA, 1 Gb (64 Mx16-bit) DDR2 SDRAM, high-efficiency switching power supplies, and two high-density 0.8-mm expansion connectors. The high-speed USB 2.0 interface provides fast configuration downloads and PC-FPGA communication as well as easy access with our popular FrontPanel application and SDK. A flexible, multiple-output PLL is also provided on-board.



Documentation and Reference Materials

The following is a comprehensive list of documentation available for this device.

XEM6010 User's Manual	This online documentation space.
XEM6010 Pins Reference	The interactive Pins reference for the device provides detailed pinout information as well as automated constraint file generation. Export functionality is provided to PDF, CSV. Constraint files are provided for UCF, XCD (Xilinx) and QSF, SDF (Altera).
FrontPanel SDK User's Manual	The online documentation space for the FrontPanel SDK.
FrontPanel API Reference	Online API reference with detailed usage for every API method.

Copyright

Software, documentation, samples, and related materials are Copyright © 2006-2018 Opal Kelly Incorporated.

Opal Kelly Incorporated
Portland, OR
<https://www.opalkelly.com>

All rights reserved. Unauthorized duplication, in whole or part, of this document by any means except for brief excerpts in published reviews is prohibited without the express written permission of Opal Kelly Incorporated.

Opal Kelly® and FrontPanel® are registered trademarks of Opal Kelly Incorporated. Linux is a registered trademark of Linus Torvalds. Microsoft and Windows are both registered trademarks of Microsoft Corporation. All other trademarks referenced herein are the property of their respective owners and no trademark rights are claimed.